

# PAGis partners showcase programming at 8th Annual GIS Day

Approximately 225 public officials, government employees, businesspersons, and high school students gathered November 8, 2006, at ALLTEL Arena in North Little Rock for presentations on the powerful technology we know as geographic information system (GIS) programming.

The Pulaski Area Geographic Information System (PAGis) was the lead sponsor of the local observance, with 12 other governmental entities joining in with various programming demonstrations. The event was a showcase of their GIS capabilities and an overall demonstration of

why GIS technology matters to all of us. Attendance at the GIS Day 2006 observance was the highest ever for the local event.

"Special thanks go to **Julie Kent**, PAGis Administrative Assistant. She was the 'chief master sergeant' behind it all," notes **Jos Bell**, Manager for PAGis and CAW's GIS Section, in commending and thanking Julie on behalf of all of the participating entities.

In particular with 13 agencies showcasing the utilization of GIS, the event provided opportunities for attendees to meet and network with GIS professionals, learn about the latest in the cutting-edge technology and user applications, and explore the daily operations of GIS in municipal, county, and state governments. Along with table-top exhibits and a map gallery, the event offered special curriculum for high school stu-

dents who participate in the Environmental and Spatial Technology (EAST) Initiative.

The event hours were 10 a.m.-3 p.m., and while this year's official international GIS Day was November 15, "the Central Arkansas event has become so popular that we could not find a place to have our event on the same international date as the rest of the world, so we celebrated early," Jos explains.

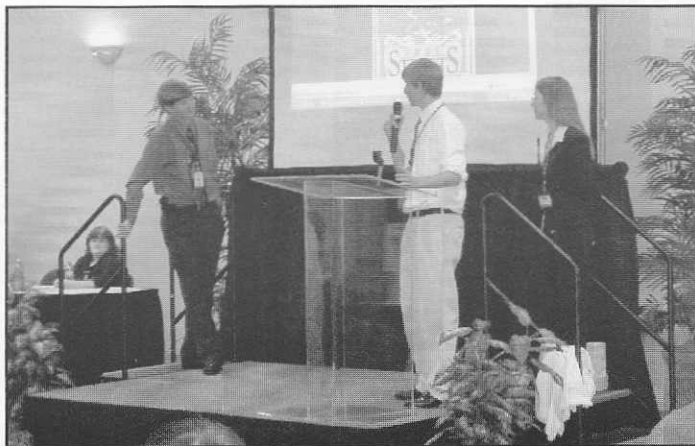
Special guests this year were then Little Rock Mayor **Jim Dailey** and students from Fountain Lake High School (Garland County) and Central

International Studies High School (Little Rock).

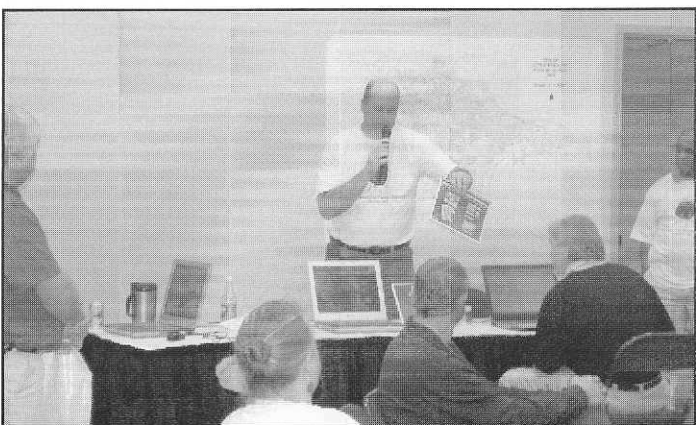
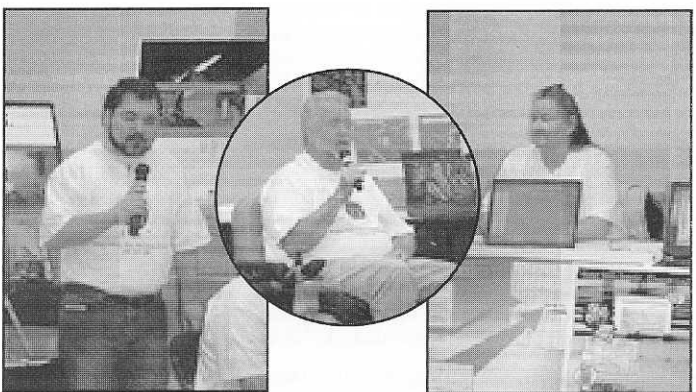
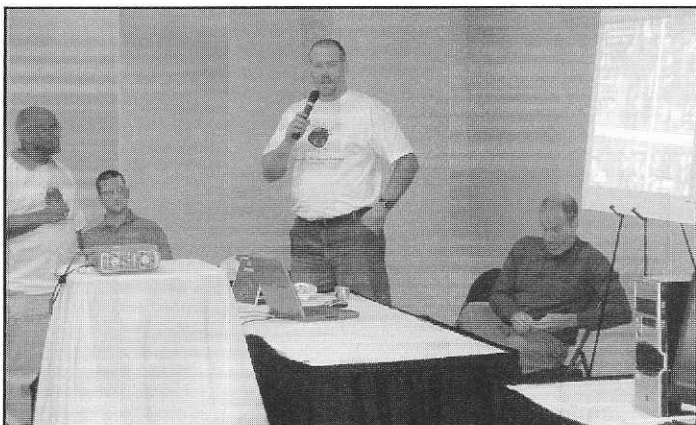
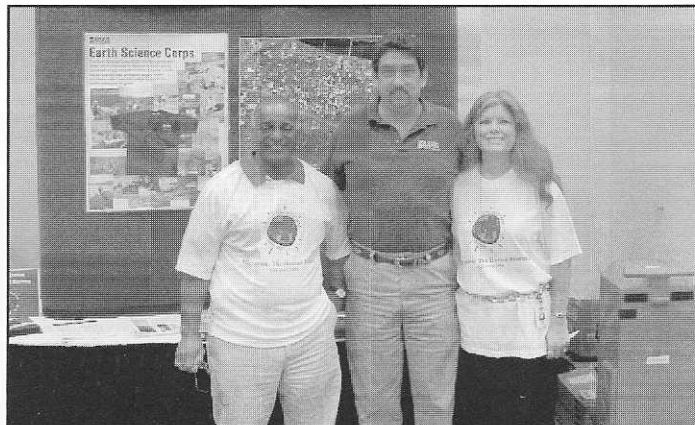
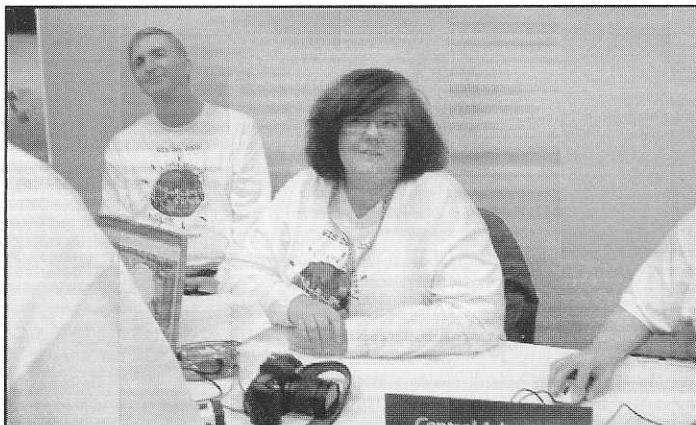
In addition to Julie, the PAGis Team includes **Hal Edwards**, Programmer/Analyst, and **Chris Owen** and **Tony Vestal**, Senior GIS Technicians. **Ian Bowles** and **Kevin Koonce** are former members of the PAGis staff.

Our GIS Team includes **John Davis**, **Jeanette Glancy**, and **Teresa Uekman**, Graphic Technicians; **Monte Myers** and **Gary Wittmuss**, GIS Technicians; **John Pfenenger**, Field Data Collector; **Hong Sun**, Data Base Coordinator; and Jos.

Commendations go to PAGis, the CAW GIS Team, and their event partners on a successful GIS Day 2006. We also extend thanks to you on your accomplishments and progress with GIS technology and for the positive world of difference that you and GIS technology make in our everyday lives. 💧



## 8th Annual GIS Day observance (continued)



## 2006 GIS DAY Partners

Pulaski Area Geographic Information System

Central Arkansas Water

City of Little Rock

City of North Little Rock

Little Rock Wastewater Utility

North Little Rock Waste Water Utility

Pulaski County Road and Bridge Division

Environmental and Spatial Technology  
(EAST Lab) Initiative

Central International Studies High School  
(Little Rock School District)

Fountain Lake High School (Garland County)

Arkansas Game & Fish Commission

Arkansas Highway and Transportation Department

Conway Corporation

U.S. Geological Survey

University of Arkansas at Little Rock

ESRI (Environmental Research Systems Institute)